



ካቶሊካዊት ቤተ ክርስቲያን
CATHOLIC CHURCH
P. O. Box 12 - HAWASSA
(SNNPRS) **ETHIOPIA**

Tel: 00251 46 220 2350
Fax: 00251 46 220 2348
Email: awcs @ ethionet.et

VICARIATE OF AWASSA

EMERGENCY DROUGHT RESPONSE

To: Our partners and stakeholders
From: Awassa Catholic Secretariat
Date: 8/30/2011
Subject: Summary of the Diocese of Awassa's emergency response to the humanitarian crisis in the south of Ethiopia

The purpose of this document is to update our close partners on the emergency drought situation escalating in the south of Ethiopia and to share the details of the 3 emergency interventions being implemented through the Awassa Catholic Secretariat (AWCS), the main coordinating office for all pastoral, social and development activities of the Catholic Church in the Diocese (Vicariate) of Awassa. The worst affected area of the diocese is the Borana zone, in the far south.

Background Description of Borana Zone

1.1 Geographical Location

- Borana is a predominantly pastoral zone located in the far south of Ethiopia.
- The zone is located in the arid and semi-arid southern lowlands, bordered by Somali region in the east, Northern Kenya to the south, Guji zone to the northeast and SNNPR in the West. (see map in Annex 1)
- Road access is very limited and most households are built in small village clusters that are far away from each other.

1.2 Climate

- Annual average rainfall ranges from 400mm to 600mm in the south and north of the zone respectively.
- Bi-modal rainfall. Typically two rainy seasons;
 - The main rainy, locally called *Ganna*, occurs March through May and is responsible for nearly 60% of the total annual rainfall.
 - The second short rain fall, *Hagaya*, occurs in the months of September and October. This contributes for slightly below 30% of the rainfall.
- Annual temperature average ranges from 19-24oc.

1.3 Economy

- Is based on pastoralism and agro-pastoralism. Being semi-nomadic, the local people move to attend to the care of their livestock – mostly cattle, camels, goats and sheep – by seeking out water and grass.
- Livestock is the main source of food and income.

- Livestock accounts for the 80% of food sources and the remaining 20% is obtained from off-farm income sources.

1.4 Water

- Water, both for livestock and human consumptions, is obtained from sources such as traditional wells, rivers, springs and surface water.

Catholic Church Presence in Borana Zone

- Personnel: 6 priests, 3 sisters, 86 personnel
- Pastoral: 3 parishes (Dadim, Yabello, Dohqolle), 12 outstation chapels, 2043 Catholics
- Education: 3 schools and 2 boarding residents for urban students
 - Dadim: Grade 1-8, 448 students
 - Daritto: Grade 1-8, 392 students
 - Dohqolle: Grade 1-6, 221 students
 - Yabello Boys Residence
 - Yabello Girls Residence
 - Administration: Spiritan Fathers
- Health Care: Dadim Primary Health Care Program
 - Serves 7 Kebeles, 28,000 population
 - Vast geographic region with Community Based Health Care program across 15 outreach sites
 - MCH, EPI, CBHC, HIV, Curative Services
 - Administration: Sisters of Charity Congregation

Situational Analysis on the Current Drought Emergency

The last good rain in Borana was March 2010. Two consecutive rainy seasons have failed to occur since then. Massive livestock deaths have occurred and this has delivered a severe blow to the lives and livelihoods of the communities in the Borana zone. The situation in Borana is currently better than compared to Somalia, but it is deteriorating quickly. As of July, the UN has declared the region a full "emergency" drought area.

Vicariate of Awassa's Action

In July, the AWCS formed an emergency taskforce with the mandate to assess and plan the emergency response programs to be implemented by the Catholic Church here in diocese, with a focus in the worst affected Borana zone.

In the last month, we conducted 3 different assessments to better understand the current realities of the situation and to help guide the response of the diocese. Our deepest assessment was an inter-agency needs assessment involving the 15 main organizations implementing social and development work in Borana and various government officials, July 26 – Aug 2. The group of 30 representatives split into 6 teams and performed a systematic analysis of the humanitarian situation across the whole region. In conjunction with government assessments, these are the key findings:

- Significant decline of rainfall in the last two rainy seasons and complete loss of rain in 2011
- Scarcity of water for livestock and human consumption. People are spending on average 3-5 hrs per day accessing water.
- Extremely low pasture/grass availability;
- No yield of current agriculture crops expected this growing season (full crop failure);
- Over 300,000 livestock deaths have occurred
- Huge inflation of the prices of food/crops/essential goods in local markets;
- Increase in dropouts from schools (16,769 students before end of this school year)
- Rise in the occurrence of dysentery and malaria
- Increase in the prevalence of malnutrition, especially moderate malnutrition cases are rising in lactating and pregnant women. As of May 2011, 4,236 under-five children and 5,958

pregnant/breastfeeding mothers suffering of moderate to severe medically diagnosed malnutrition

From these assessment results, the highest priority needs of the communities were identified, in order of priority from highest to lowest:

1. Immediate access to food, not aid in the form of money;
2. Access to adequate supply of quality water;
3. Need to protect their assets (ie. prevent livestock death);
4. People and animal health care services;
5. Provision of animal food;
6. Improving livestock and food market conditions.

We have used these priorities to decide how to respond as best we can as the Catholic Church, given our mission, resources, capacity and presence in the local community.

AWCS Emergency Programs

The Diocese of Awassa is implementing 3 emergency response programs beginning immediately in September.

1. Borana Zone School Feeding Program

- a. School feeding program for 1061 students, serving one hot meal each day at the primary schools of Dadim, Dharrito, Dhoqolle
- b. Objective:
 - i. Relieve nutritional pressure on families by supplying daily food
 - ii. To keep children in school continuing their studies during this year of emergency and avoid the high drop outs that have already been occurring in the region

2. Dadim Targeted Supplementary Feeding Program (SFP)

- a. Targeted feeding program implemented through the Dadim Primary Health Care (PHC) program, which serves 7 Kebelles (municipalities) and 28,000 people in Yabello Woreda (~25% of woreda population)
- b. Objective:
 - i. to prevent moderate acutely malnourished children under 5 years, and pregnant/breastfeeding mothers from becoming severely malnourished, and to rehabilitate back to normal nutritional status.
- c. Project Purpose:
 - i. To prevent moderate acute malnourished from developing severely acute malnutrition
 - ii. To reduce mortality and morbidity risk in children under five years
 - iii. To prevent malnutrition in pregnant and breastfeeding mothers
- d. Methodology
 - i. Community mobilization, screening, registering and ongoing monitoring to be completed through network of 15 remote outreach sites across 2500 km² catchment area
 - ii. Monthly distribution of specialized dry ration of FAMIX and oil
 - iii. Upscale Dadim PHC to meet increased health care needs
- e. Program admission: 400 beneficiaries monthly

3. Upscaling Nutrition Programs at other 11 AWCS health facilities

- a. Additional resourcing to meet temporary increased needs of malnutrition patients at other 11 health facilities across Vicariate of Awassa depending on regional situation

Program Partners

We have been overwhelmed with the beautiful response from our donor partners. In the last weeks, so many of our long-term partners and new ones have contacted us, some visited us and all have asked a common question: "How can we help!?" We have felt very encouraged!

We are working in collaboration with our close donor partners, including Caritas Austria, Cordaid, Kindermissionswerk, Catholic Mission Australia, Cafod/Trocaire/Sciaf, CRS, ECS, religious congregations and private donors, to finance and support our emergency programs.

We are proud of you for your kindness and generosity towards people you have never even met but who are suffering. We need you and we sincerely thank you for your assurance of solidarity with our people and with each one of us in the work we are doing on the ground here in Ethiopia, as we are called together to shine the love of God brightly in the world. As Pope Benedict XVI commented in response to the crisis in the Horn of Africa: "Jesus Christ reminds us of our own responsibility: to do what we can to help those who suffer from hunger and thirst." And so we model our response on Jesus' love, seeing his face in each person we serve.

Compiled by the Awassa Catholic Secretariat Emergency Taskforce

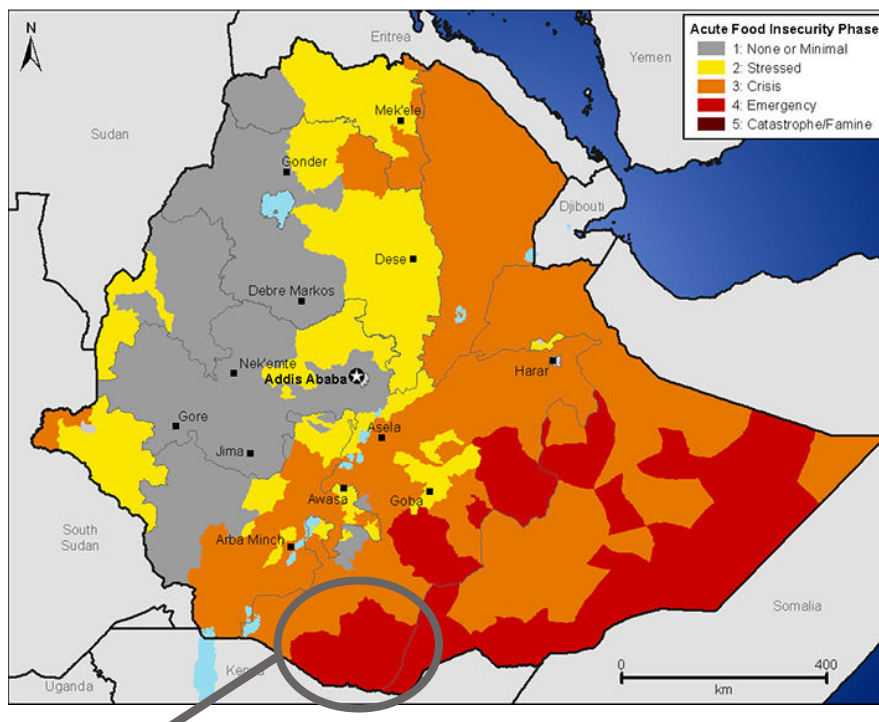
Mark Banga, Social and Development Program Manager

Yibeltal Jemberu, Health Coordinator

Tracy Doyle, Technical Consultant

Behailu Kassa, Assistant Health Coordinator

Annex 1: MAP of Food Insecurity in Ethiopia



Borana Zone, Oromia State, Ethiopia

Source: FEWSNET: <http://www.fews.net/pages/country.aspx?gb=et> , August , 2011

Photos: Dadim Primary Health Care Program, Borana Zone, Ethiopia

